

**5th Annual BT
Symposium
Gering, Nebraska
May 9, 2007**

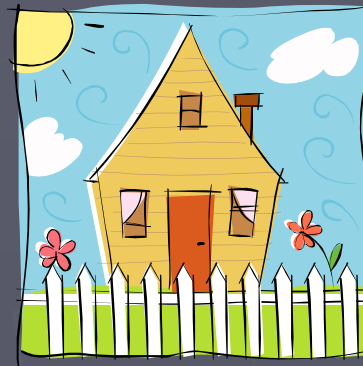
Household Preparedness

Presented By: Melody Leisy, RN BSN
Panhandle Public Health District
Emergency Response Coordinator
Public Health Nurse

Pandemic Flu Threat



Protect Your Family



Protect Your Business



Disasters CAN and DO Happen!

- ▶ 2006 Sioux and Dawes County Fires
- ▶ 2002 Ogallala Flood
- ▶ 1998 Lodgepole Creek Flood
- ▶ 2003 Benzene Spill Scottsbluff
- ▶ Early 1990s Minatare Tornado
- ▶ 2001 Halem Tornado
- ▶ 2001 Panhandle Hail Storm
- ▶ 2006 E.Coli Outbreak
- ▶ 2005-2006 Mumps Outbreak
- ▶ 2001 Terrorist Attacks
- ▶ 2002 Postal Anthrax
- ▶ School Shootings
- ▶ Bomb Threats

How To Get Started

❖ Don't have to prepare for each potential threat separately:
Try an "All Hazards" Approach

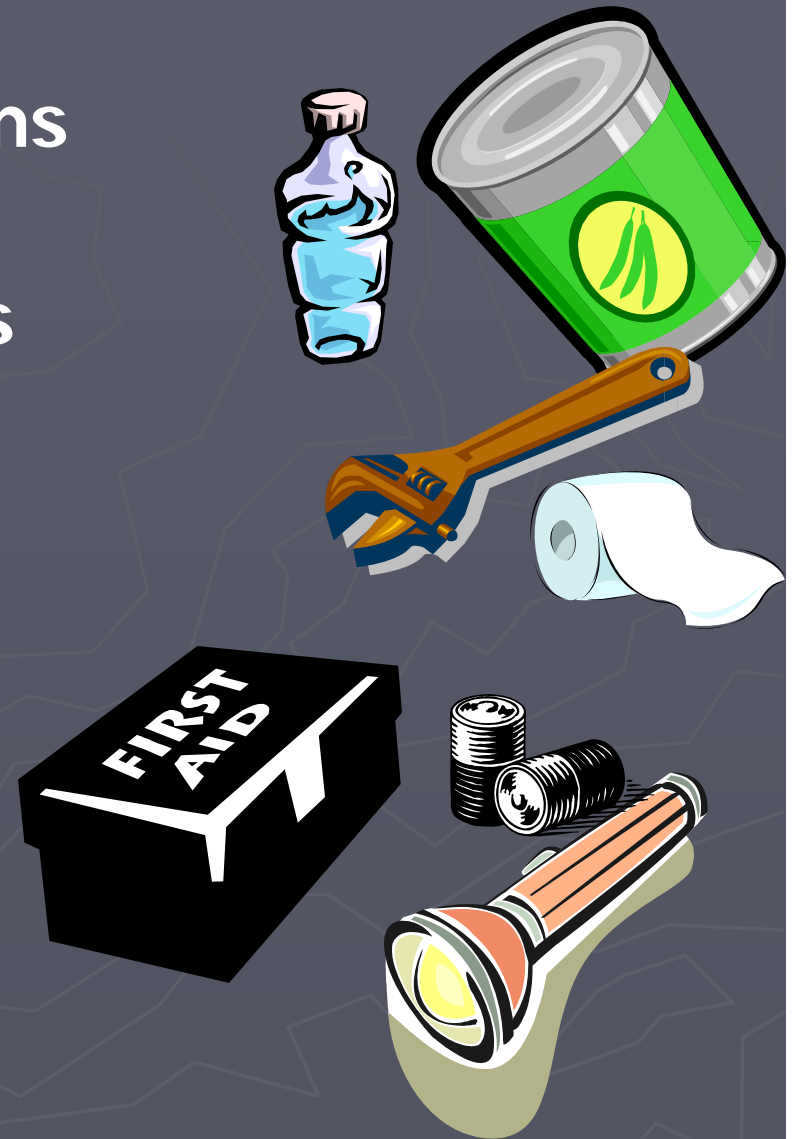
❖ Red Cross Suggests:

- ✓ Have an Emergency Preparedness Kit ready
- ✓ Create a Family Communications Plan
- ✓ Be Informed



❖ Emergency Preparedness Kits

- ▶ Non-Perishable Food Items
- ▶ Bottled Water
- ▶ First Aid Items, Medicines
- ▶ Hand-Crank or Battery Radio
- ▶ Flashlight with Batteries
- ▶ Hygiene Products
- ▶ Tools
- ▶ Copies of Important Documents



❖ Important Information

- ▶ Medical and Insurance Information for each member of the household
- ▶ Emergency Contact Information
- ▶ Family Emergency Plan



❖ Other Things to Consider:

- ▶ Children's Activity Survival Kit
- ▶ Pets
- ▶ Heirlooms
- ▶ Living Wills and Power of Attorney
- ▶ Cash



You don't have to do it alone.

- ▶ 4-H Project
- ▶ School Project
- ▶ Family Involvement
- ▶ Business supporting employees
- ▶ Assist Friends



FAMILY ACTIVITY

- ▶ Break into small groups/Families
- ▶ Receive Family Name/Type
- ▶ Assign Family Head of Household
- ▶ Prepare an Emergency Kit
- ▶ SENERIO
- ▶ Family Discussion
- ▶ Head of Household to report to group

Scenario

- ▶ WHO reports PANDEMIC FLU has reached the US and currently 200 cases in Nebraska.
- ▶ Schools, Daycares, Churches and other community gatherings are asked to close.
- ▶ Stores are in limited supplies.
- ▶ EMS are overwhelmed with calls.
- ▶ Local business are experiencing short staff.
- ▶ Hospitals are full and have a lot of calls from sick and worried well.